

March 18, 2019

RE: 28th Street West – Open house meeting #2

Dear resident:

You are invited to an open house and informal discussion to update the community on our efforts to enhance walking and biking from your homes along 28th Street West up to Cedar Lake Road. The open house will be held on:

Tuesday, April 9, 2019 6 – 7 p.m.
City Hall – Community Room
5005 Minnetonka Blvd., St. Louis Park
Short presentation at 6:15 p.m.

During the first open house staff gathered feedback from the community regarding desired options for getting from the homes along 28th Street to Cedar Lake Road. Staff engaged the Minnesota Department of Transportation (MnDOT), the owner and manager of the right of way, to discuss the possibilities of making the desired walking and biking connection.

The majority of the ideas and preliminary concepts discussed at the first open house are not supported by MnDOT. There is one option that MnDOT is open to discussing further; however, this option is expensive and isn't necessarily consistent with the feedback we heard from the community.

Due to the high costs and complications of this project, we will be asking the council later this spring to give us direction on whether staff proceeds with project development or puts the project on hold for the foreseeable future.

We'd like to share with you the concept designs, project costs and project impacts we've analyzed regarding the projects.

If you have any questions or are unable to attend the meeting, please call 952.924.2691 or email jsullivan@stlouispark.org.

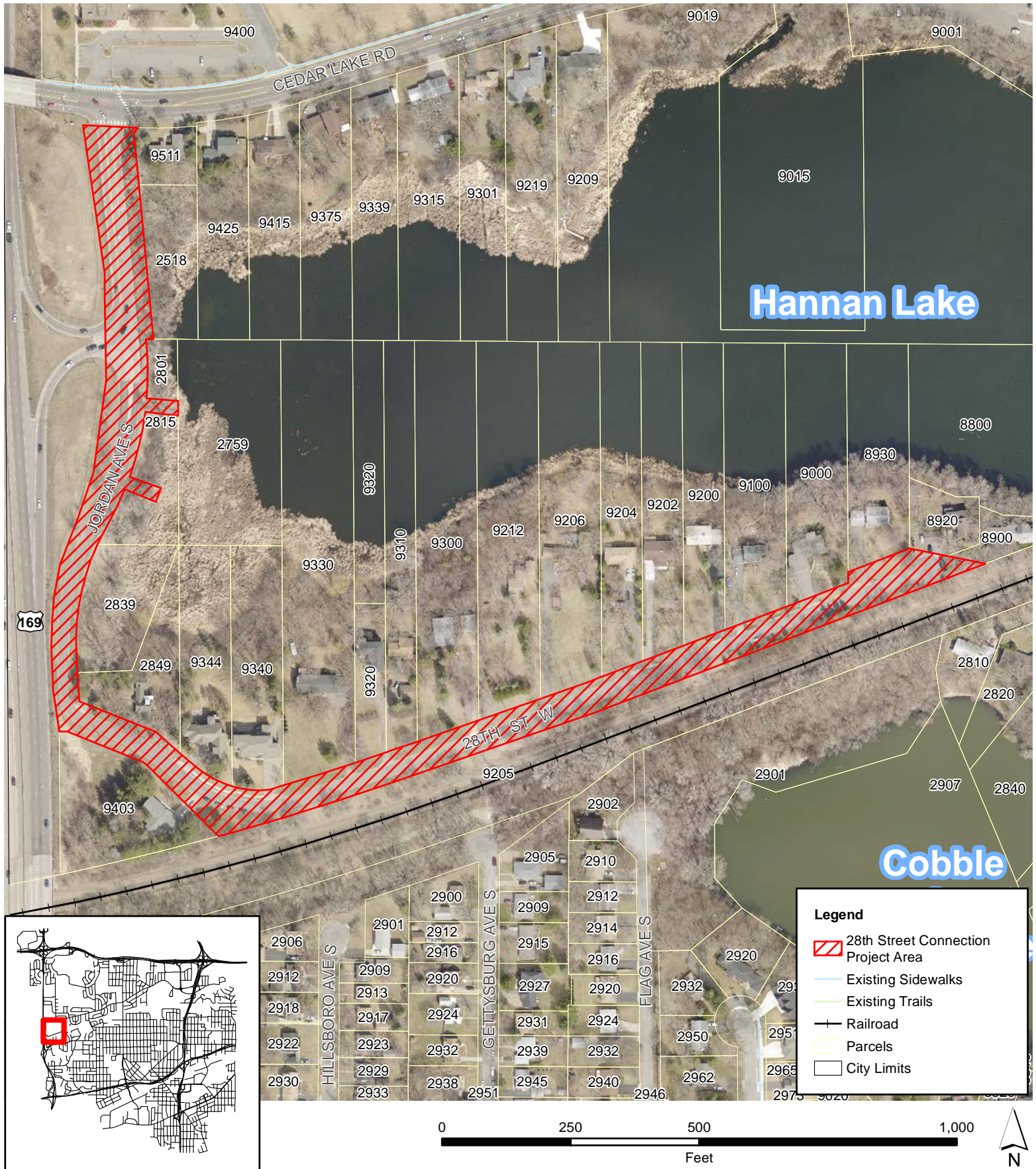
Sincerely,

Jack Sullivan, P.E.
Senior Engineering Project Manager

c: Mayor and city council, city manager

O:\Pubwks\Projects\Current or Future\4018-2000 CTP Sidewalk - Trail - Bikeway\Meetings\28th Street W\20190409_Meeting #2\2019009_28 Street Meeting #2.docx







28th Street W. Connection



Hannan Lake

Cobble

Legend

-  28th Street Connection Project Area
-  Existing Sidewalks
-  Existing Trails
-  Railroad
-  Parcels
-  City Limits

