



City of St. Louis Park

WestwoodHills

nature center

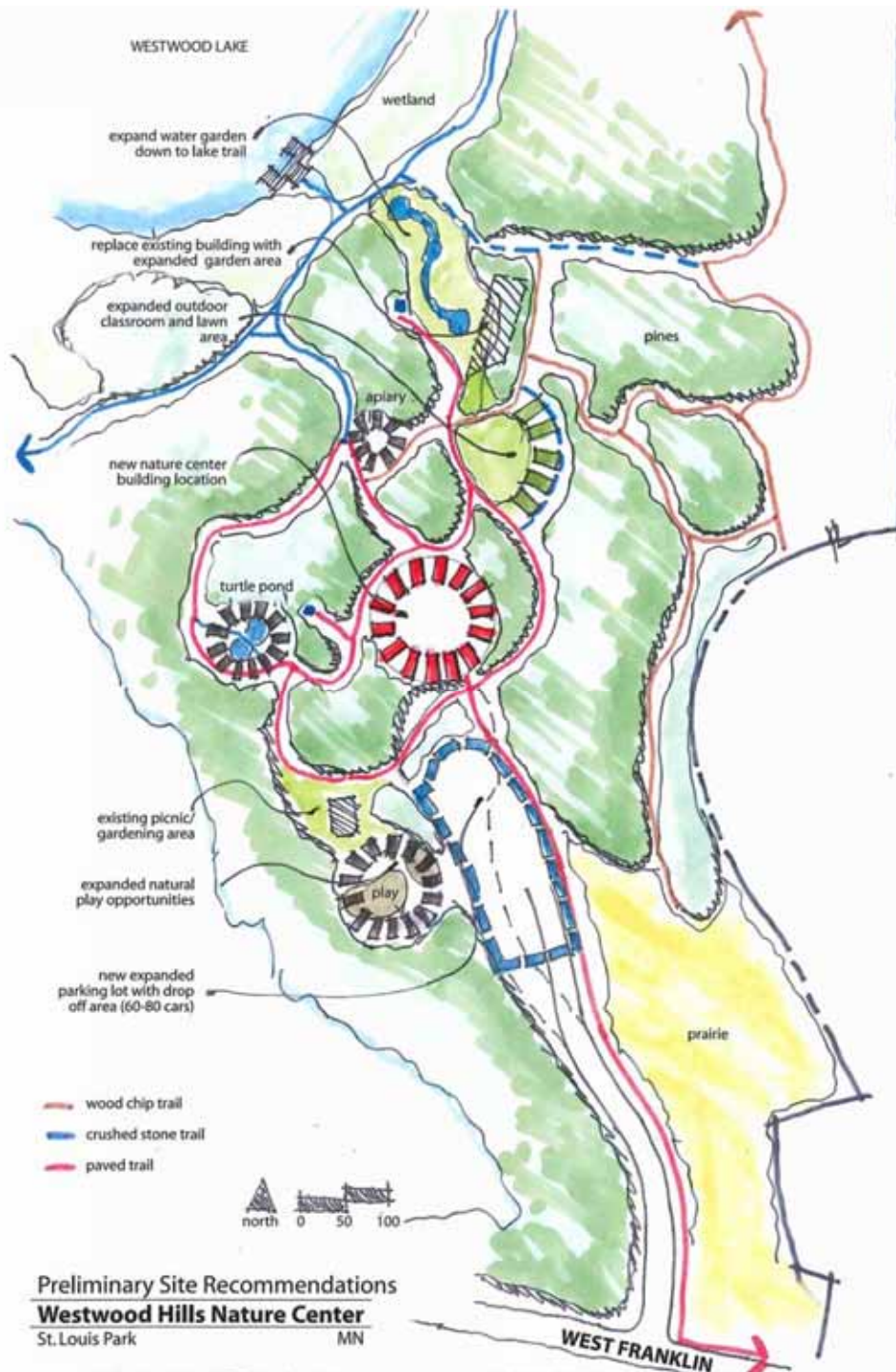
Education | Nature | Recreation | Wildlife



millerdunwiddie
ARCHITECTURE

INTERPRETIVE CENTER – Existing Building Condition

- Poor Material and Systems' Condition
 - Water Infiltration- wall and roof
 - Energy Performance and Comfort
 - System deficiencies and concerns
 - Material Quality
 - No Fire Suppression
- Location- Siting
 - Distance to Parking
 - Trial Access/Vehicle Access
- Configuration/Lack of Space
 - Entrance
 - Disconnected Staff
 - Inadequate Space for Program
 - No Storm Shelter
 - Multi-Use is Over Used



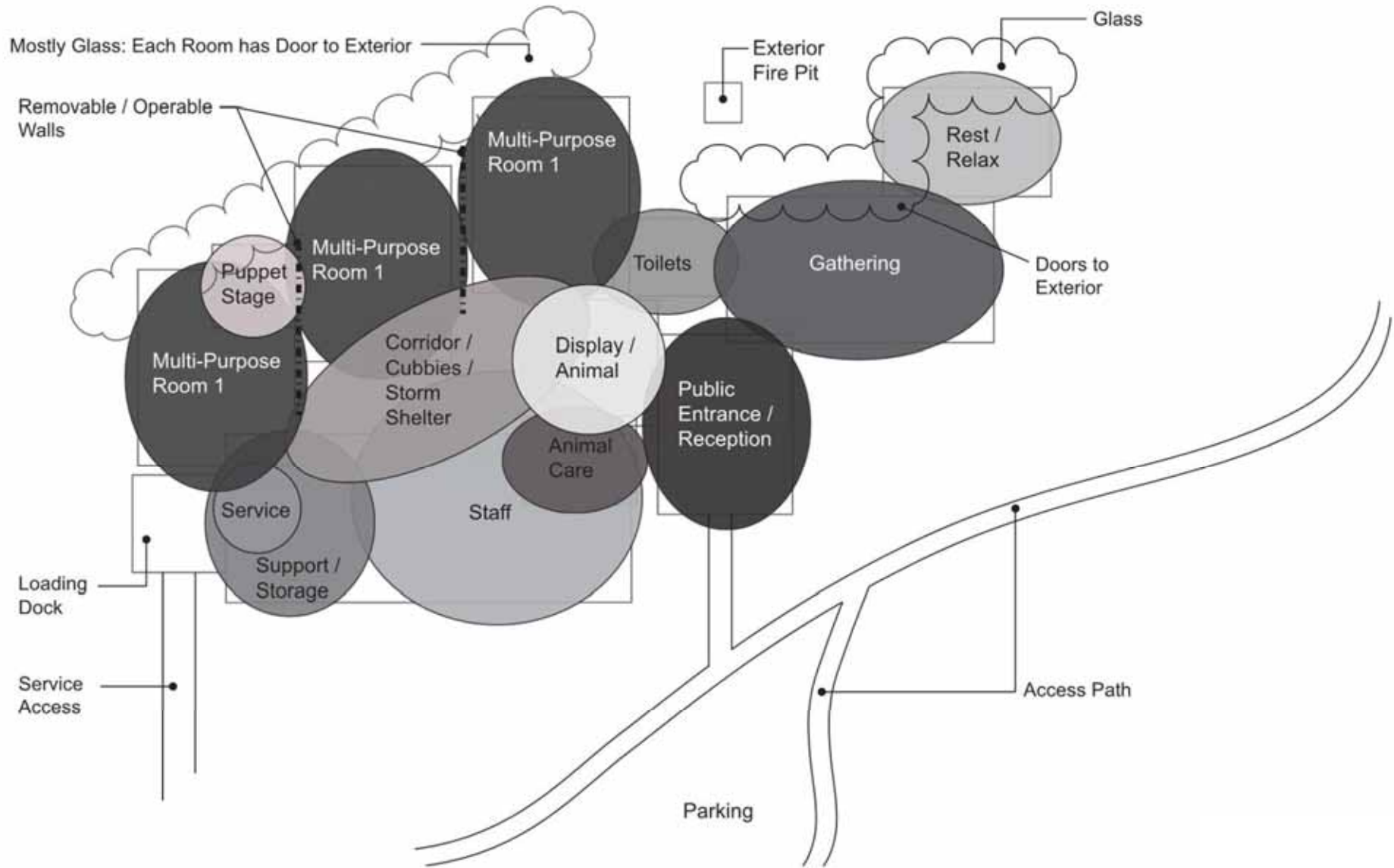
Preliminary Site Recommendations
Westwood Hills Nature Center
 St. Louis Park MN

Vision- Pg.20

Proposed 2016 Needs- Future Building Design

Entrance	600 SF
Combined Office/Staff Area	1600 SF
Support/Storage	1400 SF
Rest/Relax	600 SF
Display/Animals	800 SF
Gathering/Exhibit	1200 SF
Multi-purpose Rooms 1-2	2000 SF
Multi-purpose Room 3	1000 SF
Serving	700 SF
Corridor	700 SF
Restrooms	600 SF
<u>Mechanical</u>	<u>800 SF</u>
Total	12,000 SF

Vision- Pg.25-27



CONCEPT PLAN

WESTWOOD NATURE CENTER

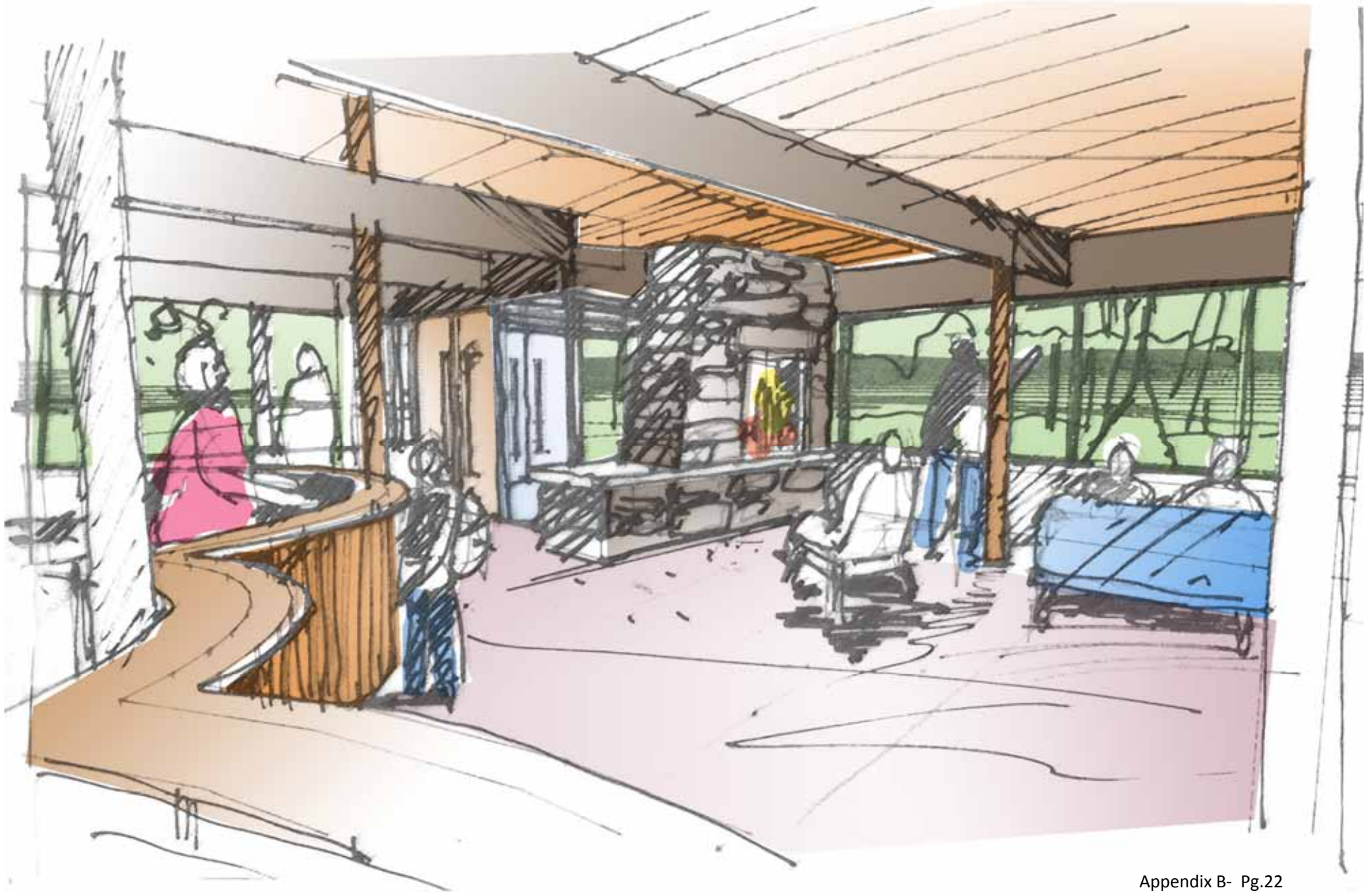
03/11/2016

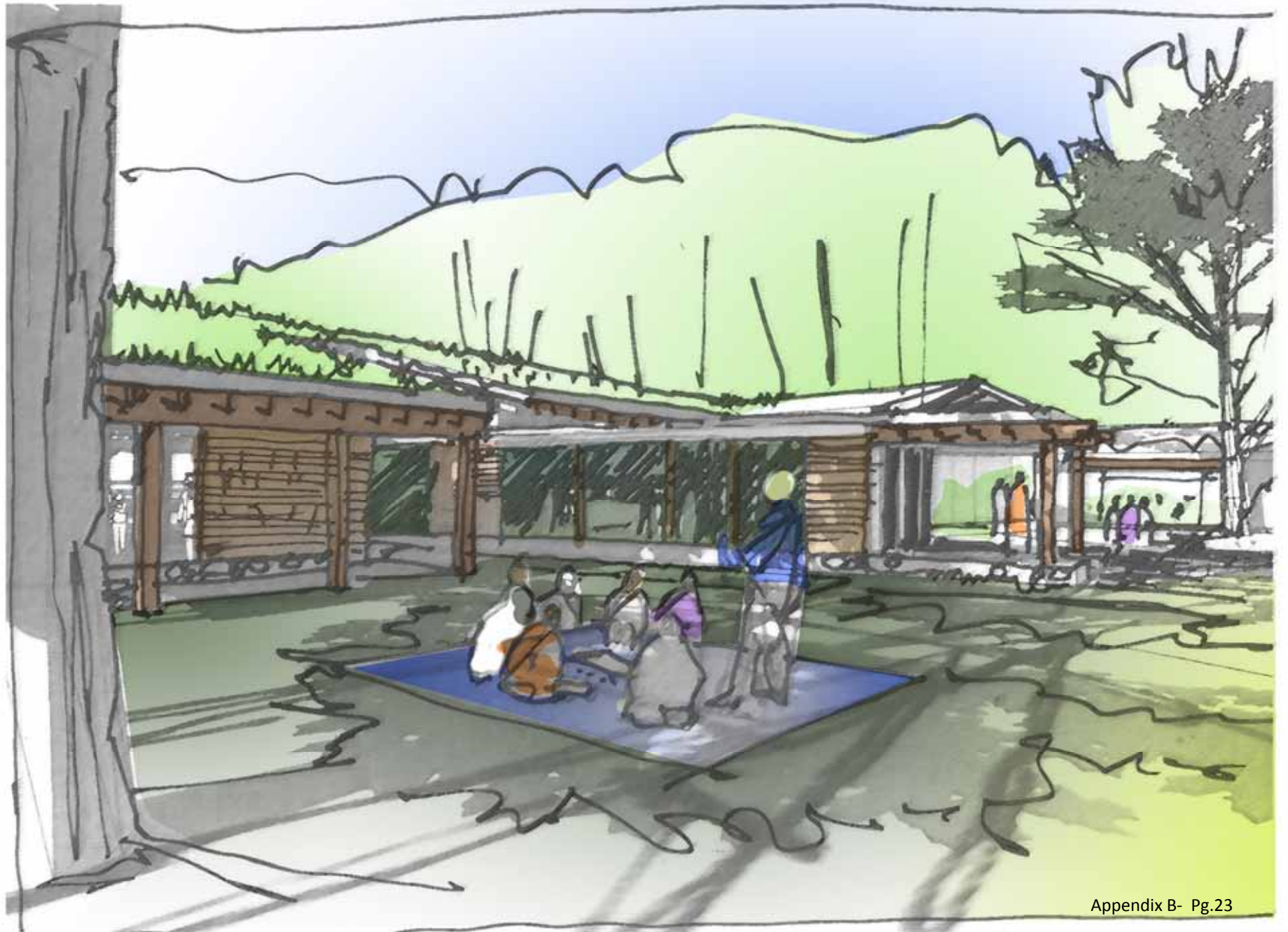
Vision- Pg.27



Appendix B- Pg.21







Appendix B- Pg.23



Westwood Hills Nature Center Schedule

The following is a timeline the City of St. Louis Park desires to meet, however it is subject to change.

Proposals sent to invited firms.....	March 13, 2017
Optional Pre-proposal Meeting at WWHNC & Site Review	April 3, 2017
Last date for questions.....	April 20, 2017
Proposals Due.....	April 24, 2017
Interviews for Selected Consultants	Week of May 8, 2017
City Council Approval	June 5, 2017
Completed Plan Specifications & Bid Documents.....	Early October 2018
Construction Starts.....	Spring 2019
Construction Completed	Fall 2020

The City has a \$12 million budget established which includes the design and construction of a new Interpretive Center including all listed amenities and demolition and removal of the existing Interpretive Center building.